

MIRAMICHI POWER CENTRE

MIRAMICHI, NB

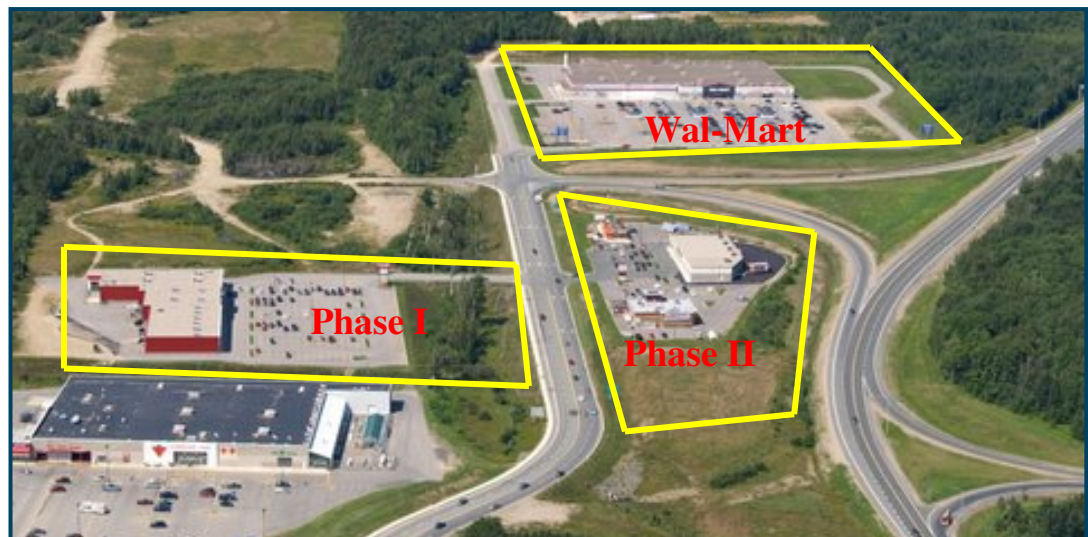
Address 98-102 Douglastown Boulevard, Miramichi,
New Brunswick

Area 58,000 sq. ft.

**Parking
Spaces** 380

**Major
Retailers** Staples, Mark's Work Wearhouse

**Property
Summary** This property is strategically located near the
new Miramichi Wal-Mart and is in close
proximity to: Canadian Tire, Sobeys and the
Northumberland Mall (the area's regional mall).



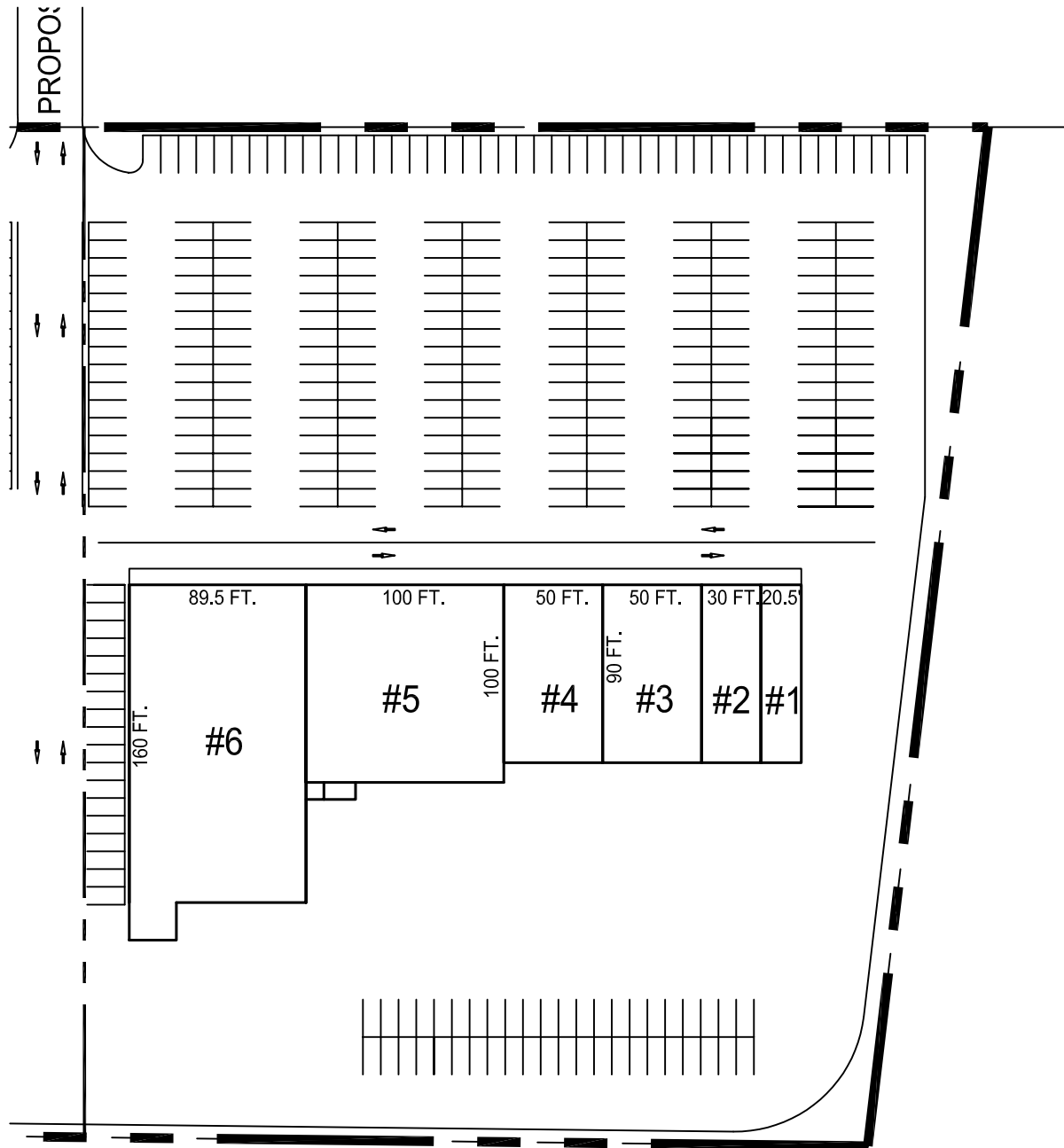
Address:
527 Queen Street, Suite 200
Fredericton, NB
E3B 1B8



Contact:
Myles Martin
506-451-1826
myles.martin@plaza.ca

MIRAMICHI POWER CENTRE

Miramichi, N.B.



MIRAMICHI POWER CENTRE

Miramichi, N.B.

| Tenant/Locataire | sq.ft./p.c. |
|--------------------------|-------------|
| 1. E.B. Games | 1,800 |
| 2. The Source | 2,712 |
| 3. Bulk Barn | 4,481 |
| 4. Reitman's | 4,469 |
| 5. Mark's Work Warehouse | 10,010 |
| 6. Staples | 14,607 |

REVISED: September 21, 2009 rev"F"

DATE : December 07, 2004

THE PLAZA GROUP

527 Queen Street, Suite 200
Fredericton, N.B.

E3B 1B8

Tel.:506-451-1826

Fax.:506-451-1802

90 Morgan Rd, Suite 200

Baie D'Urfe, Quebec

H9X 3A8

Tel.:514-457-7007

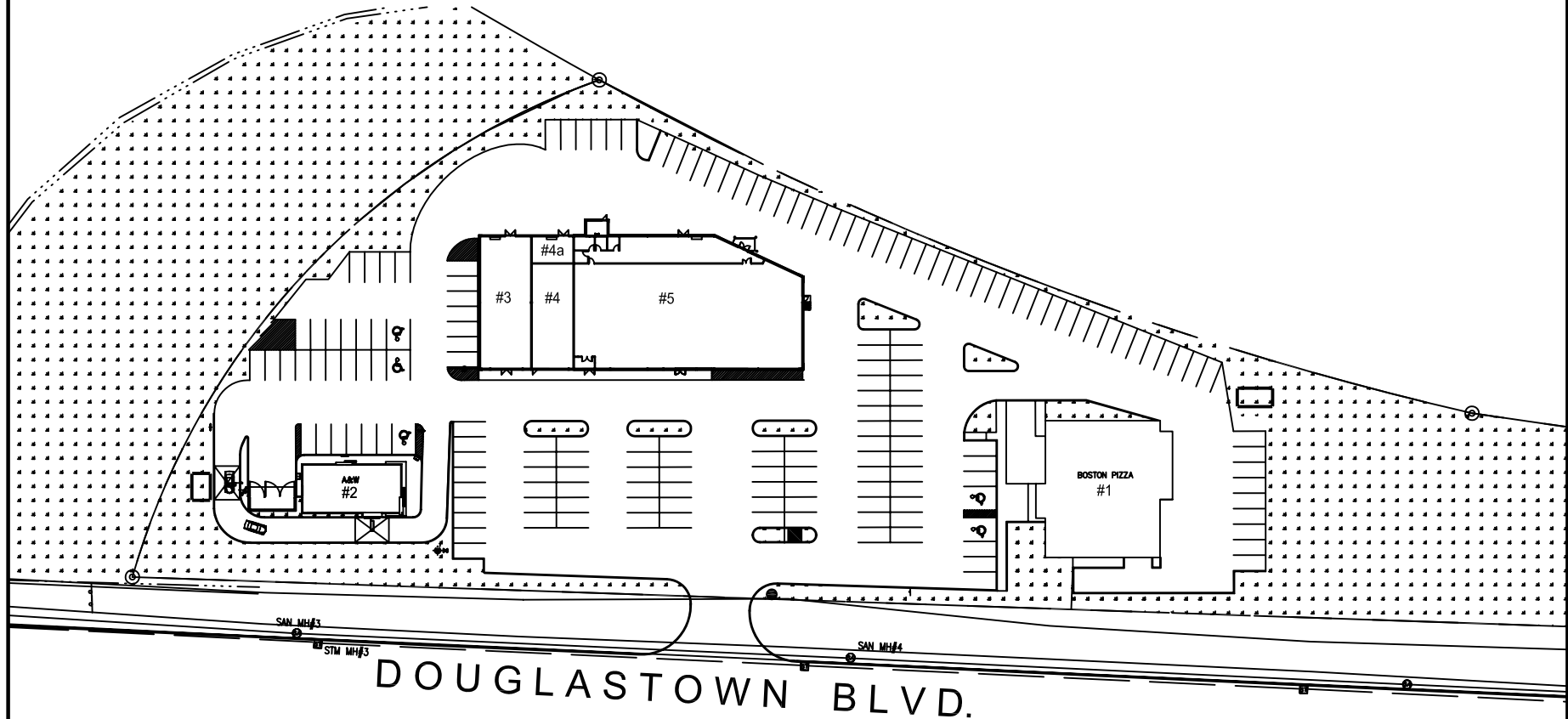
Fax.:514-457-0220

www.plaza.ca

MIRAMICHI POWER CENTRE

Miramichi, N.B.

PHASE II



| Tenant | sq.ft. |
|------------------|--------|
| 1. Boston Pizza | 5 600 |
| 2. A&W | 2 400 |
| 3. Payless Shoes | 2 439 |
| 4. Sally Beauty | 1 620 |
| 4a. Available | 380 |
| 5. Dollarama | 10,077 |

REVISED: June 10, 2011 rev."K"
DATE : October 06, 2004

THE PLAZA GROUP

527 Queen Street, Suite 200
Fredericton, N.B.
E3B 1B8
Tel.:506-451-1826
Fax.:506-451-1802

90 Morgan Rd, Suite 200
Baie D'Urfe, Quebec
H9X 3A8
Tel.:514-457-7007
Fax.:514-457-0220
www.plaza.ca